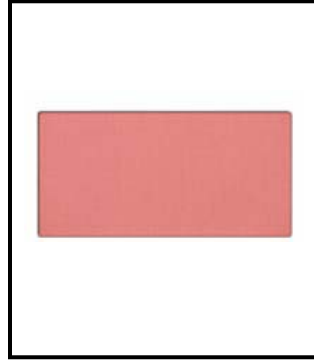


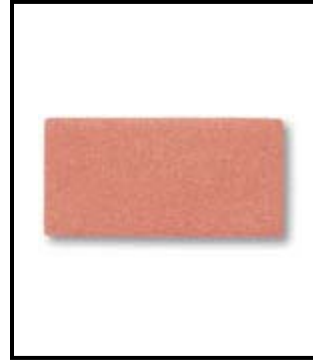
Recommended **MINERAL CHEEK COLORS** Ivory Skin Tone



Sunny Spice



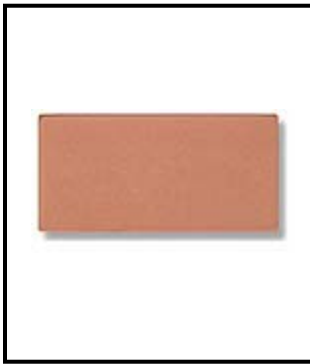
Citrus Bloom



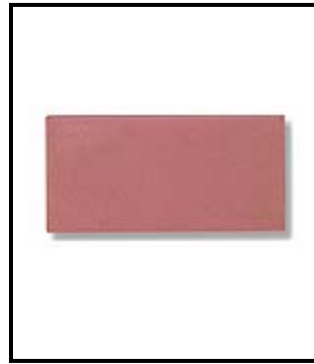
Shy Blush



Strawberry Cream



Sparkling Cider
Recommended only for
Ivory 200 and 202



Cherry Blossom
Recommended only for
Ivory 200 and 202

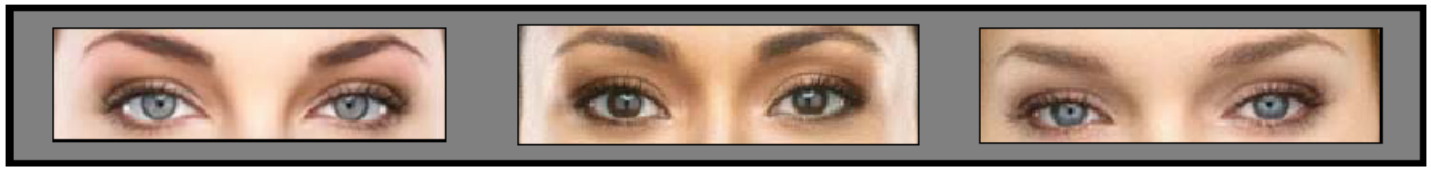
Recommended **Mineral Bronzing Powder**



Sandstone



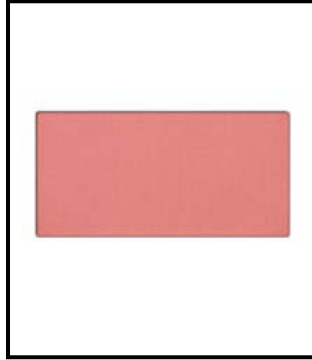
Desert Sun
Recommended only for
Ivory 200, 202, and 204



Recommended **MINERAL CHEEK COLORS** Beige Skin Tone



Sunny Spice
Recommended only for
Beige 300, 304, 305, and 404



Citrus Bloom



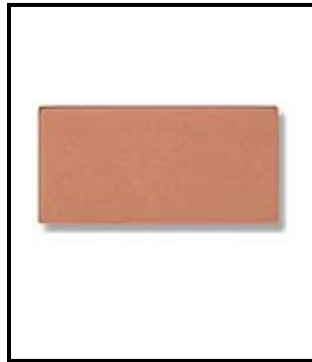
Shy Blush



Strawberry Cream



Cherry Blossom



Sparkling Cider
Not recommended for
Beige 305



Bold Berry
Recommended only for
Beige 402

Recommended **Mineral Bronzing Powder**



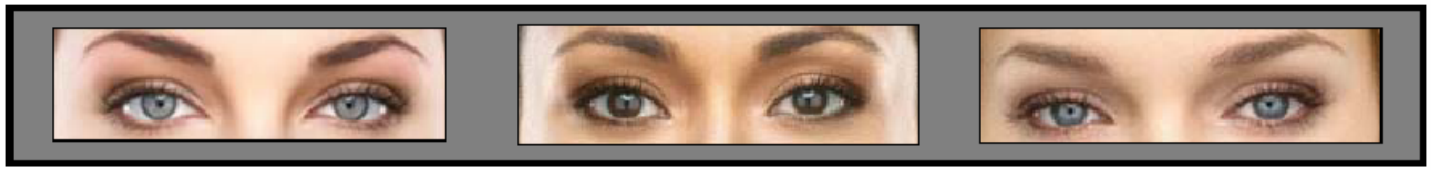
Sandstone
Not recommended for
Beige 402



Desert Sun



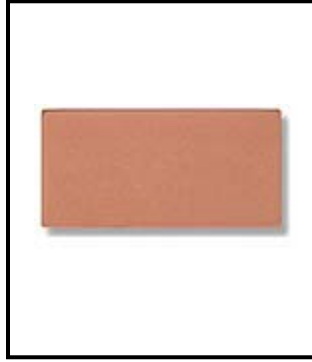
Bronze Diva
Not recommended for
Beige 304, 305



Recommended **MINERAL CHEEK COLORS** Bronze Skin Tone



Strawberry Cream
Recommended only for
Bronze 500, 504, and 507



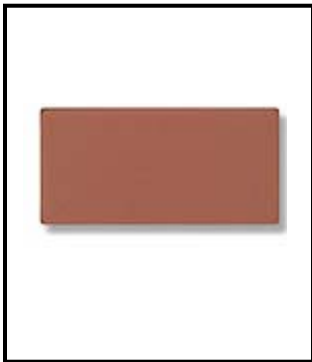
Sparkling Cider
Recommended only for
Bronze 500 and 504



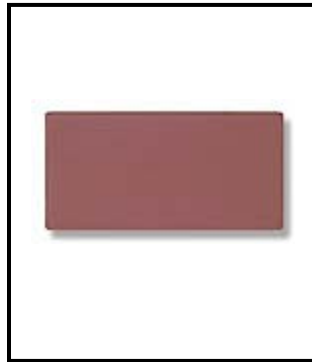
Bold Berry



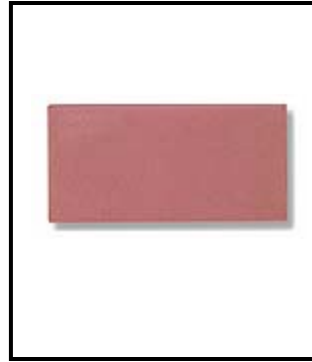
Golden Copper



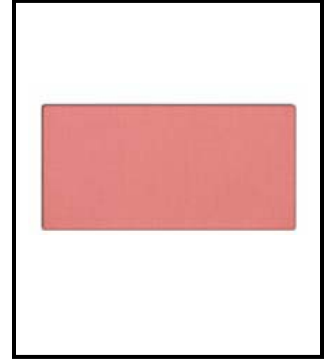
Cinnamon Stick



Berry Brown
Not recommended for
Bronze 500 and 504.



Cherry Blossom
Recommended only for
Bronze 500 and 504.



Citrus Bloom
Recommended only for
Bronze 500 and 504.

Recommended **Mineral Bronzing Powder**



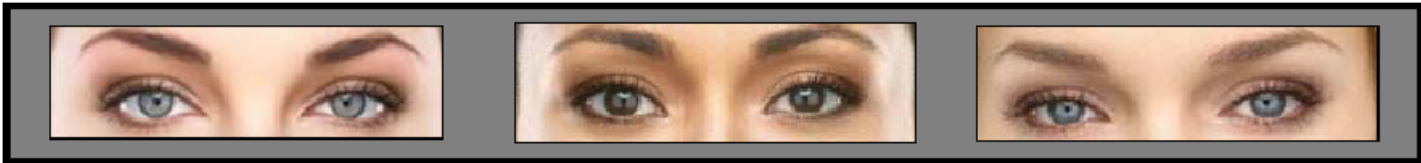
Desert Sun



Bronze Diva
Recommended only for
Bronze 500, 504, and 507



Canyon Gold

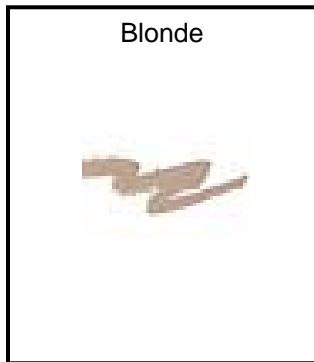


Recommended EYEBROW PENCILS

Hair Color



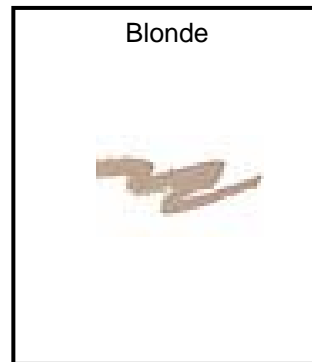
Light Blonde/Blonde



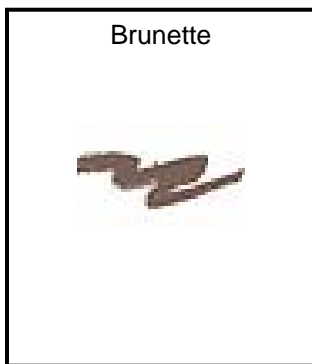
Medium/Dark Blonde



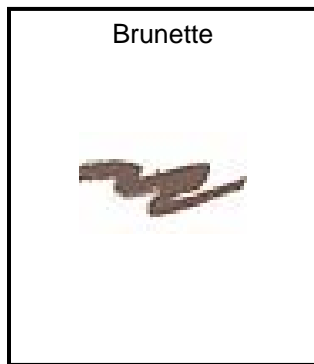
Auburn



Light Brown



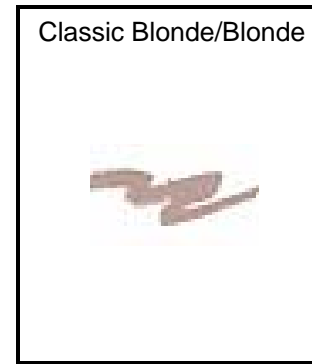
Brown/Medium Brown



Dark Brown



Very Dark Brown/Black



Gray (Ivory/Beige)



Gray (Bronze/Ebony)